



PRODUCT CATALOG

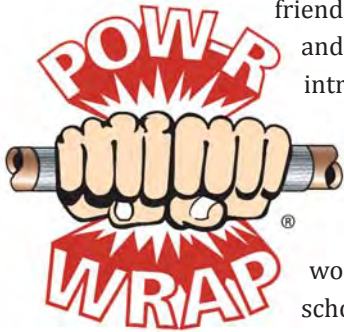
POW-R WRAP / POW-R PATCH / STIC-O-STEEL POW-R PUTTY / FREEZE FIX / CABLE SAWS



we simply find a better way

For more than a decade, ATI has developed products based on the philosophy that there must simply be a better way of dealing with everyday mechanical mishaps and repairs.

With this focus, **ATI** first introduced the **POW-R WRAP** pipe repair kit. **POW-R WRAP** was developed as a simple, user-friendly method of repairing leaks and breaks in water lines. After its introduction to the marketplace, many more uses for **POW-R WRAP** became apparent. The **POW-R WRAP** kit is now being used throughout the world in plants, factories, ships, schools, oil and gas companies, utility companies, lawn and garden maintenance businesses, hatcheries, wineries, farms and plantations. **POW-R WRAP** is solving such problems as corrosion prevention, gas line repair, insulation, encapsulation and the strengthening of all types of pipes and hoses.



Following the success of **POW-R WRAP**, **ATI** introduced the **POW-R PATCH**, a convenient no-measure, no-mess patch that can be used on a broad spectrum of surfaces, creating an instant repair of tanks and containers of all kinds. For example, **POW-R PATCH** is being utilized by the transportation industry to repair overseas containers and semi-trailers and also by the irrigation industry to repair chemical fertilizer tanks and the like. In addition to its industrial and institutional applications, **POW-R PATCH** is being used to repair common household gutters as well as for minor roof repairs.

The next product to join **ATI**'s line of repair products was the **STIC-O-STEEL POW-R PUTTY**. This product contains a steel reinforced

epoxy putty mixture that can be lathed, drilled, tapped and machined creating a simple, creative problem solver that can be used by residential and industrial users alike. **STIC-O-STEEL** is rapidly gaining popularity throughout the oil & gas industries as a cold-weld solution for offshore rigs. Other users, such as manufacturing plants, processing plants, farms, plantations and everyday homeowners, have recognized **STIC-O-STEEL** for its high quality and simple application methods when making repairs.



Another product in **ATI**'s line of repair products is **FREEZE-FIX**, a repair system for frozen pipes. This kit makes difficult repairs in the coldest of weather conditions possible. **FREEZE-FIX** allows the user to make permanent repairs to leaking or burst pipes, tank lines, air-lines and fluid lines of all kinds



even in the worst winter conditions.

The most recent product to join **ATI**'s ever expanding line of repair products is the **Access-Able Technologies Plastic Cable Saw known as Pow-R Grip**. This saw is both economical and durable and is designed for cutting plastic piping such as PVC, CPVC, ABS as well as other plastics.

ATI's innovative production methods have not only resulted in the highest quality products, but have created efficiencies that are passed on to the consumer, making the **ATI** family of products a simple, cost effective way



Flashpoint Offshore Racing Fort Lauderdale, Florida

The rigorous punishment on a boat during an offshore race can be brutal to the equipment. During the first of two races on a championship weekend race, the Flashpoint owners found this to be very true. The pounding of the first race had caused a crack between the exhaust header and runner. The temperatures at this point reach over 450° F. A trip to the local marine supply store produced the solution in ATI's POW-R WRAP and allowed Flashpoint to finish the weekend of racing.



Gary Ethridge, Owner Flashpoint Offshore Racing

"The product went on very quickly and with little mess. After the product dried we tested the motor with no leaks. On Sunday we completed the race, over one hour and thirty minutes of rough pounding in 3-5 foot seas, and your product did exactly what it said it would do which was hold up under heat and pressure. This allowed us to take forth place in the highly competitive World Championships."

Jon Eakes (diy Network) Quebec, Canada

Jon Eakes is the host of the home improvement television show "Just Ask Jon Eakes" on the diy Network. As a home improvement expert, Jon Eakes is continually searching for new problem solving products that actually work. He was so impressed by POW-R WRAP's repair abilities, he included a demonstration on his show and also sells POW-R WRAP on his web site.



Jon Eakes Just Ask Jon Eakes

"It's like an emergency plumbing crew right in your workshop drawer! But don't wait for a leak to buy one. Think of Pow-R Wrap as a plumbing Emergency Room kit or an insurance policy."

Ionics Constructors Trinidad Ltd. Trinidad, West Indies

Ionics is a global leader in water purification and wastewater treatment. They have over 50 years of experience in the design, installation, operation and maintenance of water and wastewater treatment systems. During the commissioning and performance testing of the desalination plant at Point Lisas, Trinidad, Ionics relied on ATI products for repairs to the piping infrastructure.

Andy Mahadeo, Operations Manager ANSA McAL Chemicals Ltd.

“The Pow-R Wrap Resin-Impregnated Fiberglass and Steel-Reinforced Epoxy Combined System...have proven to be the most cost effective repair system we have tried to date. Particularly in the case of our pipelines (both FRP and Steel). The repair procedure will even rebuild sections of deteriorated pipelines and return these to active service in a couple of hours.”



ANSA McAL Chemicals Ltd. Savonetta, Trinidad

ANSA McAL Chemicals Ltd. is one of the world's leading producers of bleach. The manufacturing process for bleach utilizes highly corrosive chemicals such as caustic soda, liquid chlorine, chlorinated brine and sulphuric acid. Given the effect of these corrosive chemicals on their plant, ANSA McAL is continually searching for ways to prevent damage to their equipment. The ATI family of products has provided ANSA McAL with the solution they were seeking.

Michael F. Van Buskirk, Project Manager Ionics Constructors Trinidad Ltd.

“The Pow-R Wrap Resin-Impregnated Fiberglass and Steel-Reinforced Epoxy Combined System...have proven to be the most cost effective repair system we have tried to date. Particularly in the case of our pipelines (both FRP and Steel). The repair procedure will even rebuild sections of deteriorated pipelines and return these to active service in a couple of hours.”



TABLE OF CONTENTS

Terms and Conditions2

Warranty / Claims / Returns3

POW-R WRAP®

Kit Selector Guide4

Water Activated Pipe Repair Kit5-11

Literature & Sales Aids12-14

POW-R PATCH®

15-Minute Repair Kit15-18

Literature18

STIC-O-STEEL®

The 5-Minute Cold Weld19

Literature & Sales Aids20

FREEZE-FIX®

Frozen Pipe Repair Kit23

Literature24

POW-R GRIP®

T-Handle Design21

Loop-Handle Design22

APPLICATIONS

Order Form25

Credit Application26

Terms and Conditions

These Terms and Conditions of Sale are applicable to all sales of products and services by Access-able Technologies, Inc and its subsidiaries and affiliates, and terms or conditions included in any document, which are inconsistent with these Terms and Conditions shall not be binding on Access-Able Technologies.

PRICES

Prices in the addendums are current U.S. prices at publishing and are subject to change. Confirm current prices and availability by phone, fax, e-mail or on our web site.

PAYMENT TERMS

All invoices receive a 2% discount if paid within 10 days or the net amount is due in 30 days with established credit. Other payment options include; C.O.D., Money Orders, Letter of Credit, Wire Transfer or Credit Cards.

NEW ACCOUNTS

We welcome new accounts with approved credit application (see form on page 23) included with your initial order. We accept Visa®, MasterCard®, American Express® and Discover®.

MINIMUM ORDERS

We appreciate all orders, so there is no minimum order requirement. However, a small handling fee of \$5.00 will be added to all original orders.

SHIPMENTS

Unless specified, we will determine the most expedient and efficient means of shipment. Access-Able Technologies will not be liable for any claim, loss, or damage caused in whole or in part due to delay in or failure to make delivery when such delay or failure is directly or indirectly caused by an act of God; strike or other labor difficulty; transportation problems; inability or delay in obtaining necessary labor, material or products from usual sources; material shortages; accident; act of any civil or military authority; act of war; or act of purchaser; or by the occurrence of any other contingency beyond Access-Able Technologies reasonable control. In such event, the date of delivery or time for completion shall be postponed by such length of time as may be reasonably necessary to compensate for the delay.



LIMITED WARRANTY

Access-Able Technologies Inc. warrants products sold against defects in material or workmanship as follows:

Access-Able Technologies, at its option, will repair or replace any defective product unit at no charge, or refund the purchase price to purchaser, provided that (i) the warranty claim is made in writing within the period of time specified in writing or in information enclosed with the product packaging, (ii) proof of purchase by bill of sale or receipted invoice is submitted concurrently with the claim and shows that the product is within the applicable warranty period, and (iii) the purchaser complies with Procedures for Returns listed under the general Terms and Conditions contained herein.

This warranty shall not apply to: (a) defects or damage resulting from (i) misuse of the product, (ii) use of the product in other than its normal and customary manner, (iii) accident or neglect, (iv) improper testing, operation, maintenance, service, repair, installation, or storage, (v) unauthorized alteration or modification; or (b) post-expiration dated materials.

This warranty is the exclusive remedy of the purchaser, and Access-Able Technologies disclaims all other warranties, whether express, implied or statutory, including without limitation, warranties of merchantability and fitness for a particular purpose. No employee, agent, or representative of Access-Able Technologies is authorized to bind Access-Able Technologies to any other warranty. In no event shall Access-Able Technologies be liable for incidental or consequential damages.

CLAIMS

If the product is damaged during shipment, please report the details immediately to the carrier and then to our Customer Service Department. Keep the carton and all packing materials.

All returned merchandise requires a return authorization number from our Sales Department. To obtain this number, please provide us with:

- Our reference number (on the packing slip) or our invoice number
- Your purchase order number
- Product number(s) of the items
- Reason for the return
- Date of purchase
- Action requested (credit, replacement, repair, etc.)

RETURNS

All returned merchandise must be in unused, resalable condition, and must not be contaminated with hazardous materials. Requests for returns on chemicals must be made within 30 days of receipt. Returns without prior authorization may be refused or a restocking fee may be charged. Note: Certain items are not returnable for credit, including:

- Opened chemicals or foil bagged units
- Post-expiration dated materials
- Custom or special orders



Pow-R Wrap®
 Water Activated Fiberglass Wrap
 Repairs Almost Any Material
 No Tools Needed - EPA Approved
 Cures in 30 Minutes - Strong (600 PSI)

POW-R WRAP® KIT SELECTOR GUIDE								
Pipe Size	O.D. ¹	Cir.	PW130	PW230	PW260	PW872	PW3108	PW4180
1/4"	0.540"	1.696"						
1/2"	0.840"	2.639"						
3/4"	1.050"	3.299"						
1"	1.315"	4.131"						
1 1/4"	1.660"	5.215"						
1 1/2"	1.900"	5.969"						
2"	2.375"	7.461"						
2 1/2"	2.875"	9.032"						
3"	3.500"	10.996"						
4"	4.500"	14.137"						
5"	5.563"	17.477"						

(¹) The outside diameter (O.D.) shown is for PVC, Stainless Pipe (Not for CPVC, PEX, PB or Copper Pipes)

POW-R WRAP® KIT SELECTOR GUIDE								
Pipe Size	O.D. ¹	Cir.	PW6300	PW8300	PW4360	PW4540	PW6540	PW8540
6"	6.625"	20.813"						
8"	8.625"	27.096"						
10"	10.75"	33.772"						
12"	12.75"	40.055"						
14"	14.75"	46.338"						
16"	16.75"	52.622"						
18"	18.75"	58.905"						
20"	20.75"	65.188"						

(¹) The outside diameter (O.D.) shown is for PVC, Stainless Pipe (Not for CPVC, PEX, PB or Copper Pipes)



Pow-R Wrap®
 Water Activated Fiberglass Wrap
 Repairs Almost Any Material
 No Tools Needed - EPA Approved
 Cures in 30 Minutes - Strong (600 PSI)

POW-R WRAP® KIT 130 (Repairs up to 1/2" Pipe¹)			
PRODUCT #	WRAP SIZE	CASE QUANTITIES	CARTON QUANTITIES
PW130CS	1" X 30"	Case - 12 Kits	Master - 48 Kits
UPC CODE	SHIPPING INFORMATION		
	DESCRIPTION	CASE	MASTER
615595000037	Carton Size	10 1/2" X 8 X 7"	17" X 11" X 16"
	Carton Weight	2.5lbs	10lbs
POW-R WRAP® KIT CONTENTS			
✓ Water Activated Wrap		✓ 1/2 Ounce Putty	✓ Full Color Inserts
✓ Latex Gloves		✓ Claimshell Package	



POW-R WRAP® KIT 132 (Repairs up to 1/2" Pipe¹)			
PRODUCT #	WRAP SIZE	CASE QUANTITIES	CARTON QUANTITIES
PW132CS	2 - 1" X 30"	Case - 12 Kits	Master - 48 Kits
UPC CODE	SHIPPING INFORMATION		
	DESCRIPTION	CASE	MASTER
615595000032	Carton Size	10 1/2" X 8 X 7"	17" X 11" X 16"
	Carton Weight	3lbs	12lbs
POW-R WRAP® KIT CONTENTS			
✓ Water Activated Wrap		✓ 1/2 Ounce Putty	✓ Full Color Inserts
✓ Latex Gloves		✓ Claimshell Package	



(¹) See Kit Selector Guide.



Pow-R Wrap®
 Water Activated Fiberglass Wrap
 Repairs Almost Any Material
 No Tools Needed - EPA Approved
 Cures in 30 Minutes - Strong (600 PSI)

POW-R WRAP® KIT 230 (Repairs up to 3/4" Pipe¹)			
PRODUCT #	WRAP SIZE	CASE QUANTITIES	CARTON QUANTITIES
PW230CS	2" X 30"	Case - 12 Kits	Master - 48 Kits
UPC CODE	SHIPPING INFORMATION		
	DESCRIPTION	CASE	MASTER
615595000058	Carton Size	10 1/2" X 8 X 7"	17" X 11" X 16"
	Carton Weight	3lbs	12lbs
POW-R WRAP® KIT CONTENTS			
✓ Water Activated Wrap		✓ 1/2 Ounce Putty	✓ Full Color Inserts
✓ Latex Gloves		✓ Claimshell Package	



POW-R WRAP® KIT 260 (Repairs up to 1 1/2" Pipe¹)			
PRODUCT #	WRAP SIZE	CASE QUANTITIES	CARTON QUANTITIES
PW260CS	2" X 60"	Case - 12 Kits	Master - 48 Kits
UPC CODE	SHIPPING INFORMATION		
	DESCRIPTION	CASE	MASTER
615595000072	Carton Size	10 1/2" X 8 X 7"	17" X 11" X 16"
	Carton Weight	3.5lbs	14lbs
POW-R WRAP® KIT CONTENTS			
✓ Water Activated Wrap		✓ 1/2 Ounce Putty	✓ Full Color Inserts
✓ Latex Gloves		✓ Claimshell Package	



(¹) See Kit Selector Guide.



Pow-R Wrap®
 Water Activated Fiberglass Wrap
 Repairs Almost Any Material
 No Tools Needed - EPA Approved
 Cures in 30 Minutes - Strong (600 PSI)

POW-R WRAP® KIT 3108 (Repairs up to 4" Pipe¹)			
PRODUCT #	WRAP SIZE	CASE QUANTITIES	CARTON QUANTITIES
PW3108CS	3" X 108"	Case - 12 Kits	Master - 48 Kits
UPC CODE	SHIPPING INFORMATION		
	DESCRIPTION	CASE	MASTER
615595300031	Carton Size	10 1/2" X 8 X 7"	17" X 11" X 16"
	Carton Weight	5.5lbs	22lbs
POW-R WRAP® KIT CONTENTS			
✓ Water Activated Wrap		✓ 1 Ounce Putty	✓ Full Color Inserts
✓ Latex Gloves		✓ Claimshell Package	



POW-R WRAP® KIT 4180 (Repairs up to 5" Pipe¹)			
PRODUCT #	WRAP SIZE	CASE QUANTITIES	CARTON QUANTITIES
PW4180CS	4" X 180"	Case - 8 Kits	Master - 32 Kits
UPC CODE	SHIPPING INFORMATION		
	DESCRIPTION	CASE	MASTER
615595400052	Carton Size	10 1/2" X 8 X 7"	17" X 11" X 16"
	Carton Weight	6lbs	24lbs
POW-R WRAP® KIT CONTENTS			
✓ Water Activated Wrap		✓ 1 Ounce Putty	✓ Full Color Inserts
✓ Latex Gloves		✓ Claimshell Package	



(¹) See Kit Selector Guide.



Pow-R Wrap®
 Water Activated Fiberglass Wrap
 Repairs Almost Any Material
 No Tools Needed - EPA Approved
 Cures in 30 Minutes - Strong (600 PSI)

POW-R WRAP® KIT 4360 (Repairs up to 12" Pipe¹)				
PRODUCT #	WRAP SIZE	CASE QUANTITIES	CARTON QUANTITIES	
PW4360CS	4" X 360"	Case - 8 Kits	Master - 32 Kits	
UPC CODE	SHIPPING INFORMATION			
	DESCRIPTION	CASE	MASTER	
615595400076	Carton Size	10 1/2" X 8 X 7"	17" X 11" X 16"	
	Carton Weight	9lbs	36lbs	
POW-R WRAP® KIT CONTENTS				
✓ Water Activated Wrap		✓ 1 Ounce Putty	✓ Full Color Inserts	
✓ Latex Gloves		✓ Claimshell Package		

POW-R WRAP® KIT 4540 (Repairs up to 20" Pipe¹)				
PRODUCT #	WRAP SIZE	CASE QUANTITIES	CARTON QUANTITIES	
PW4540S	4" X 540"	Individual Kits	Master - 4 Kits	
UPC CODE	SHIPPING INFORMATION			
	DESCRIPTION	CASE	MASTER	
615595400083	Carton Size	9" X 7" X 5"	17" X 11" X 16"	
	Carton Weight	2lbs	8lbs	
POW-R WRAP® KIT CONTENTS				
✓ Water Activated Wrap		✓ 2 Ounce Putty	✓ Full Color Inserts	
✓ Heavy Duty Gloves		✓ Boxed Package		

(¹) See Kit Selector Guide.



Pow-R Wrap®
 Water Activated Fiberglass Wrap
 Repairs Almost Any Material
 No Tools Needed - EPA Approved
 Cures in 30 Minutes - Strong (600 PSI)

POW-R WRAP® KIT 6300 (Repairs up to 10" Pipe¹)				
PRODUCT #	WRAP SIZE	CASE QUANTITIES	CARTON QUANTITIES	
PW6300S	6" X 300"	Individual Kits	Master - 4 Kits	
UPC CODE	SHIPPING INFORMATION			
	DESCRIPTION	CASE	MASTER	
615595600018	Carton Size	9" X 7" X 5"	17" X 11" X 16"	
	Carton Weight	2lbs	8lbs	
POW-R WRAP® KIT CONTENTS				
✓ Water Activated Wrap		✓ 2 Ounce Putty	✓ Full Color Inserts	
✓ Heavy Duty Gloves		✓ Boxed Package		

POW-R WRAP® KIT 4360 (Repairs up to 20" Pipe¹)				
PRODUCT #	WRAP SIZE	CASE QUANTITIES	CARTON QUANTITIES	
PW6540S	6" X 540"	Individual Kits	Master - 4 Kits	
UPC CODE	SHIPPING INFORMATION			
	DESCRIPTION	CASE	MASTER	
615595600025	Carton Size	9" X 7" X 5"	17" X 11" X 16"	
	Carton Weight	3lbs	12lbs	
POW-R WRAP® KIT CONTENTS				
✓ Water Activated Wrap		✓ 2 Ounce Putty	✓ Full Color Inserts	
✓ Heavy Duty Gloves		✓ Boxed Package		

(¹) See Kit Selector Guide.



Pow-R Wrap®
 Water Activated Fiberglass Wrap
 Repairs Almost Any Material
 No Tools Needed - EPA Approved
 Cures in 30 Minutes - Strong (600 PSI)

POW-R WRAP® KIT 8300 (Repairs up to 10" Pipe¹)				
PRODUCT #	WRAP SIZE	CASE QUANTITIES	CARTON QUANTITIES	
PW8300S	8" X 300"	Individual Kits	Master - 4 Kits	
UPC CODE	SHIPPING INFORMATION			
	DESCRIPTION	CASE	MASTER	
615595800067	Carton Size	9" X 7" X 5"	17" X 11" X 16"	
	Carton Weight	3lbs	12lbs	
POW-R WRAP® KIT CONTENTS				
✓ Water Activated Wrap		✓ 2 Ounce Putty	✓ Full Color Inserts	
✓ Heavy Duty Gloves		✓ Boxed Package		

POW-R WRAP® KIT 8540 (Repairs up to 20" Pipe¹)				
PRODUCT #	WRAP SIZE	CASE QUANTITIES	CARTON QUANTITIES	
PW8540S	8" X 540"	Individual Kits	Master - 4 Kits	
UPC CODE	SHIPPING INFORMATION			
	DESCRIPTION	CASE	MASTER	
615595800074	Carton Size	9" X 7" X 5"	17" X 11" X 16"	
	Carton Weight	4lbs	16lbs	
POW-R WRAP® KIT CONTENTS				
✓ Water Activated Wrap		✓ 2 Ounce Putty	✓ Full Color Inserts	
✓ Heavy Duty Gloves		✓ Boxed Package		

(¹) See Kit Selector Guide.



Pow-R Wrap®
 Water Activated Fiberglass Wrap
 Repairs Almost Any Material
 No Tools Needed - EPA Approved
 Cures in 30 Minutes - Strong (600 PSI)

POW-R WRAP® KIT 872 (Repairs up to 2 1/2" Pipe ¹)			
PRODUCT #	WRAP SIZE	CASE QUANTITIES	CARTON QUANTITIES
PW872CS	8" X 72"	Case - 8 Kits	Master - 32 Kits
UPC CODE	SHIPPING INFORMATION		
	DESCRIPTION	CASE	MASTER
615595800050	Carton Size	10 1/2" X 8 X 7"	17" X 11" X 16"
	Carton Weight	9lbs	36lbs
POW-R WRAP® KIT CONTENTS			
✓ Water Activated Wrap		✓ 1 Ounce Putty	✓ Full Color Inserts
✓ Latex Gloves		✓ Claimshell Package	



(¹) See Kit Selector Guide.

Pow-R Wrap Steam begins to pour out from under your vehicle's hood. Upon inspection you learn that one of your hoses has cracked from age. It's not practical to carry extra engine hoses, but Pow-R Wrap is an industrial-strength water-activated fiberglass tape that seals leaks in pipes and hoses. It repairs almost any surface permanently and can withstand 300 psi. This is a good product to transfer back and forth from your tow vehicle to the boat. (It can also repair holes in a boat hull.) **Cost:** \$7.95 for a kit that repairs up to half-inch pipes at accessabletech.com.

...it's best to be prepared... The ultimate kit con-
 ...potpourri of items that
 ...assemble yourself. Here's
 ...have in ours.

...Wrap Steam begins to pour
 ...under your vehicle's hood.
 ...upon you learn that one of
 ...has cracked from age. It's
 ...not practical to carry extra engine
 ...hoses, but Pow-R Wrap is an industrial-
 ...strength water-activated fiberglass tape
 ...that seals leaks in pipes and hoses. It
 ...repairs almost any surface perma-
 ...and can withstand 300 psi. This is a

Featured in

The Authority On Recreational Boating



Pow-R Patch®
 The 15-Minute Repair Kit
 Pre-measured Kits
 No Mess
 Flat Surface Repairs

POW-R PATCH® KIT 212			
PRODUCT #	PATCH SIZE	CASE QUANTITIES	CARTON QUANTITIES
PA212C	2" X 12"	Case - 12 Kits	Master - 48 Kits
UPC CODE	SHIPPING INFORMATION		
	DESCRIPTION	CASE	MASTER
615595000016	Carton Size	11 1/2" X 5 X 6 1/2"	19" X 12" X 7"
	Carton Weight	4lbs	16lbs
POW-R PATCH® KIT CONTENTS			
✓ Pre-measured Kit		✓ Claimshell Package	✓ Full Color Inserts
✓ Latex Gloves			



POW-R PATCH® KIT 220			
PRODUCT #	PATCH SIZE	CASE QUANTITIES	CARTON QUANTITIES
PA220C	2" X 20"	Case - 12 Kits	Master - 48 Kits
UPC CODE	SHIPPING INFORMATION		
	DESCRIPTION	CASE	MASTER
615595000061	Carton Size	11 1/2" X 5 X 6 1/2"	19" X 12" X 7"
	Carton Weight	4lbs	16lbs
POW-R PATCH® KIT CONTENTS			
✓ Pre-measured Kit		✓ Claimshell Package	✓ Full Color Inserts
✓ Latex Gloves			





Pow-R Patch®
 The 15-Minute Repair Kit
 Pre-measured Kits
 No Mess
 Flat Surface Repairs

POW-R PATCH® KIT 212			
PRODUCT #	PATCH SIZE	CASE QUANTITIES	CARTON QUANTITIES
PA38C	3" X 8"	Case - 12 Kits	Master - 48 Kits
UPC CODE	SHIPPING INFORMATION		
	DESCRIPTION	CASE	MASTER
615595000092	Carton Size	11 1/2" X 5 X 6 1/2"	19" X 12" X 7"
	Carton Weight	4lbs	16lbs
POW-R PATCH® KIT CONTENTS			
✓ Pre-measured Kit		✓ Claimshell Package	✓ Full Color Inserts
✓ Latex Gloves			



POW-R PATCH® KIT 220			
PRODUCT #	PATCH SIZE	CASE QUANTITIES	CARTON QUANTITIES
PA46C	4" X 6"	Case - 12 Kits	Master - 48 Kits
UPC CODE	SHIPPING INFORMATION		
	DESCRIPTION	CASE	MASTER
615595000078	Carton Size	11 1/2" X 5 X 6 1/2"	19" X 12" X 7"
	Carton Weight	4lbs	16lbs
POW-R PATCH® KIT CONTENTS			
✓ Pre-measured Kit		✓ Claimshell Package	✓ Full Color Inserts
✓ Latex Gloves			





Pow-R Patch®
 The 15-Minute Repair Kit
 Pre-measured Kits
 No Mess
 Flat Surface Repairs

POW-R PATCH® KIT 212			
PRODUCT #	PATCH SIZE	CASE QUANTITIES	CARTON QUANTITIES
PA412C	4" X 12"	Case - 12 Kits	Master - 48 Kits
UPC CODE	SHIPPING INFORMATION		
	DESCRIPTION	CASE	MASTER
615595000085	Carton Size	11 1/2" X 5 X 6 1/2"	19" X 12" X 7"
	Carton Weight	4lbs	16lbs
POW-R PATCH® KIT CONTENTS			
✓ Pre-measured Kit		✓ Claimshell Package	✓ Full Color Inserts
✓ Latex Gloves			



POW-R PATCH® KIT 220			
PRODUCT #	PATCH SIZE	CASE QUANTITIES	CARTON QUANTITIES
PA68C	6" X 8"	Case - 12 Kits	Master - 48 Kits
UPC CODE	SHIPPING INFORMATION		
	DESCRIPTION	CASE	MASTER
615595000108	Carton Size	11 1/2" X 5 X 6 1/2"	19" X 12" X 7"
	Carton Weight	4lbs	16lbs
POW-R PATCH® KIT CONTENTS			
✓ Pre-measured Kit		✓ Claimshell Package	✓ Full Color Inserts
✓ Latex Gloves			





Pow-R Patch®
 The 15-Minute Repair Kit
 Pre-measured Kits
 No Mess
 Flat Surface Repairs

POW-R PATCH® KIT 212				
PRODUCT #	PATCH SIZE	CASE QUANTITIES	CARTON QUANTITIES	
PA88C	8" X 8"	Case - 12 Kits	Master - 48 Kits	
UPC CODE	SHIPPING INFORMATION			
	DESCRIPTION	CASE	MASTER	
615595000115	Carton Size	11 1/2" X 5 X 6 1/2"	19" X 12" X 7"	
	Carton Weight	4lbs	16lbs	
POW-R PATCH® KIT CONTENTS				
✓ Pre-measured Kit		✓ Claimshell Package	✓ Full Color Inserts	
✓ Latex Gloves				



POW-R PATCH® KIT 212				
PRODUCT #	PATCH SIZE	CASE QUANTITIES	CARTON QUANTITIES	
PA812C	8" X 12"	Case - 12 Kits	Master - 48 Kits	
UPC CODE	SHIPPING INFORMATION			
	DESCRIPTION	CASE	MASTER	
615595000122	Carton Size	11 1/2" X 5 X 6 1/2"	19" X 12" X 7"	
	Carton Weight	4lbs	16lbs	
POW-R PATCH® KIT CONTENTS				
✓ Pre-measured Kit		✓ Claimshell Package	✓ Full Color Inserts	
✓ Latex Gloves				





STIC-O-STEEL®
 5-Minute Cold Weld Epoxy Putty
 Impervious to all Acids
 Withstands Temperatures of 550° F

STIC-O-STEEL® 4 OUNCE SINGLES					
PRODUCT #	DESCRIPTION	QUANTITY	PRODUCT #	DESCRIPTION	QUANTITY
SS4	Grey	1	SS4A	Aluminum	1

STIC-O-STEEL® 4 OUNCE TUBES - COUNTER DISPLAYS					
PRODUCT #	TUBE SIZE	CASE QUANTITIES	CARTON QUANTITIES		
SS412	4 Ounce	Case - 12 Sticks	Master - 24 Sticks		
UPC CODE	SHIPPING INFORMATION				
	DESCRIPTION	CASE	MASTER		
615595405008	Carton Size	8 3/4" X 6 3/4" X 2 1/2"	9" X 7" X 5"		
	Carton Weight	5lbs	9lbs		
STIC-O-STEEL® TUBE CONTENTS					
✓ Two Part Epoxy Putty		✓ Plastic Tube Package	✓ Application Directions		

STIC-O-STEEL® 4 OUNCE TUBES - COUNTER DISPLAYS					
PRODUCT #	TUBE SIZE	CASE QUANTITIES	CARTON QUANTITIES		
SS412A	4 Ounce	Case - 12 Sticks	Master - 24 Sticks		
UPC CODE	SHIPPING INFORMATION				
	DESCRIPTION	CASE	MASTER		
615595405026	Carton Size	8 3/4" X 6 3/4" X 2 1/2"	9" X 7" X 5"		
	Carton Weight	5lbs	9lbs		
STIC-O-STEEL® TUBE CONTENTS					
✓ Two Part Epoxy Putty		✓ Plastic Tube Package	✓ Application Directions		





STIC-O-STEEL®
 5-Minute Cold Weld Epoxy Putty
 Impervious to all Acids
 Withstands Temperatures of 550° F

STIC-O-STEEL® 4 OUNCE SINGLES					
PRODUCT #	DESCRIPTION	QUANTITY	PRODUCT #	DESCRIPTION	QUANTITY
SS4C	Copper	1	SS4W	White	1

STIC-O-STEEL® 4 OUNCE TUBES - COUNTER DISPLAYS					
PRODUCT #	TUBE SIZE	CASE QUANTITIES	CARTON QUANTITIES		
SS412C	4 Ounce	Case - 12 Sticks	Master - 24 Sticks		
UPC CODE	SHIPPING INFORMATION				
	DESCRIPTION	CASE	MASTER		
615595405033	Carton Size	8 3/4" X 6 3/4" X 2 1/2"	9" X 7" X 5"		
	Carton Weight	5lbs	9lbs		
STIC-O-STEEL® TUBE CONTENTS					
✓ Two Part Epoxy Putty		✓ Plastic Tube Package	✓ Application Directions		

STIC-O-STEEL® 4 OUNCE TUBES - COUNTER DISPLAYS					
PRODUCT #	TUBE SIZE	CASE QUANTITIES	CARTON QUANTITIES		
SS412W	4 Ounce	Case - 12 Sticks	Master - 24 Sticks		
UPC CODE	SHIPPING INFORMATION				
	DESCRIPTION	CASE	MASTER		
615595405026	Carton Size	8 3/4" X 6 3/4" X 2 1/2"	9" X 7" X 5"		
	Carton Weight	5lbs	9lbs		
STIC-O-STEEL® TUBE CONTENTS					
✓ Two Part Epoxy Putty		✓ Plastic Tube Package	✓ Application Directions		



STIC-O-STEEL®
 5-Minute Cold Weld Epoxy Putty
 Impervious to all Acids
 Withstands Temperatures of 550° F

STIC-O-STEEL® 4 OUNCE SINGLES					
PRODUCT #	DESCRIPTION	QUANTITY	PRODUCT #	DESCRIPTION	QUANTITY
SS2	Grey	1	SS2A	Aluminum	1


STIC-O-STEEL® 2 OUNCE TUBES					
PRODUCT #	TUBE SIZE	CASE QUANTITIES	CARTON QUANTITIES		
SS224	2 Ounce	Case - 24 Sticks	Master - 48 Sticks		
UPC CODE	SHIPPING INFORMATION				
	DESCRIPTION	CASE	MASTER		
615595205002	Carton Size	8 3/4" X 6 3/4" X 2 1/2"	9" X 7" X 5"		
	Carton Weight	5lbs	9lbs		
STIC-O-STEEL® TUBE CONTENTS					
✓ Two Part Epoxy Putty		✓ Plastic Tube Package	✓ Application Directions		


STIC-O-STEEL® 2 OUNCE TUBES					
PRODUCT #	TUBE SIZE	CASE QUANTITIES	CARTON QUANTITIES		
SS224A	2 Ounce	Case - 24 Sticks	Master - 48 Sticks		
UPC CODE	SHIPPING INFORMATION				
	DESCRIPTION	CASE	MASTER		
615595205022	Carton Size	8 3/4" X 6 3/4" X 2 1/2"	9" X 7" X 5"		
	Carton Weight	5lbs	9lbs		
STIC-O-STEEL® TUBE CONTENTS					
✓ Two Part Epoxy Putty		✓ Plastic Tube Package	✓ Application Directions		



STIC-O-STEEL®
 5-Minute Cold Weld Epoxy Putty
 Impervious to all Acids
 Withstands Temperatures of 550° F

STIC-O-STEEL® 4 OUNCE SINGLES					
PRODUCT #	DESCRIPTION	QUANTITY	PRODUCT #	DESCRIPTION	QUANTITY
SS2C	Copper	1	SS2W	White	1

STIC-O-STEEL® 2 OUNCE TUBES				
PRODUCT #	TUBE SIZE	CASE QUANTITIES	CARTON QUANTITIES	
SS224C	2 Ounce	Case - 24 Sticks	Master - 48 Sticks	
UPC CODE	SHIPPING INFORMATION			
	DESCRIPTION	CASE	MASTER	
615595205039	Carton Size	8 3/4" X 6 3/4" X 2 1/2"	9" X 7" X 5"	
	Carton Weight	5lbs	9lbs	
STIC-O-STEEL® TUBE CONTENTS				
✓ Two Part Epoxy Putty		✓ Plastic Tube Package	✓ Application Directions	

STIC-O-STEEL® 2 OUNCE TUBES				
PRODUCT #	TUBE SIZE	CASE QUANTITIES	CARTON QUANTITIES	
SS224W	2 Ounce	Case - 24 Sticks	Master - 48 Sticks	
UPC CODE	SHIPPING INFORMATION			
	DESCRIPTION	CASE	MASTER	
615595205015	Carton Size	8 3/4" X 6 3/4" X 2 1/2"	9" X 7" X 5"	
	Carton Weight	5lbs	9lbs	
STIC-O-STEEL® TUBE CONTENTS				
✓ Two Part Epoxy Putty		✓ Plastic Tube Package	✓ Application Directions	

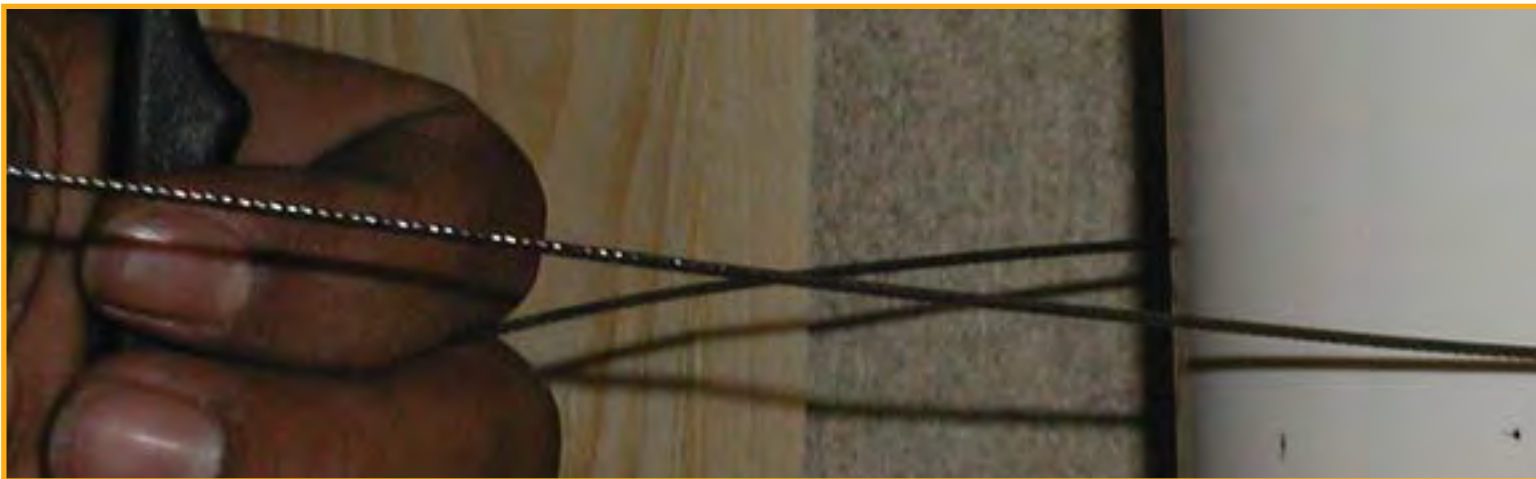


POW-R GRIP PVC CABLE SAWS®
 Strong & Comfortable T-Handles
 Stainless Steel Cable

18" PVC CABLE SAW				
PRODUCT #	TUBE SIZE	CASE QUANTITIES	CARTON QUANTITIES	
CSS18	24" Cable	Case - 100 Saws	Master - 300 Saws	
UPC CODE	SHIPPING INFORMATION			
	DESCRIPTION	CASE	MASTER	
615595900187	Carton Size	12" X 10" X 8"	24" X 12" X 12"	
	Carton Weight	4.5lbs	20.0lbs	
KIT CONTENTS				
✓ T-Handle Cable Saw		✓ Poly Bag Package	✓ Instruction Insert	



24" PVC CABLE SAW				
PRODUCT #	TUBE SIZE	CASE QUANTITIES	CARTON QUANTITIES	
CSS24	24" Cable	Case - 100 Saws	Master - 300 Saws	
UPC CODE	SHIPPING INFORMATION			
	DESCRIPTION	CASE	MASTER	
615595900248	Carton Size	12" X 10" X 8"	24" X 12" X 12"	
	Carton Weight	5.5lbs	23.5lbs	
KIT CONTENTS				
✓ T-Handle Cable Saw		✓ Poly Bag Package	✓ Instruction Insert	



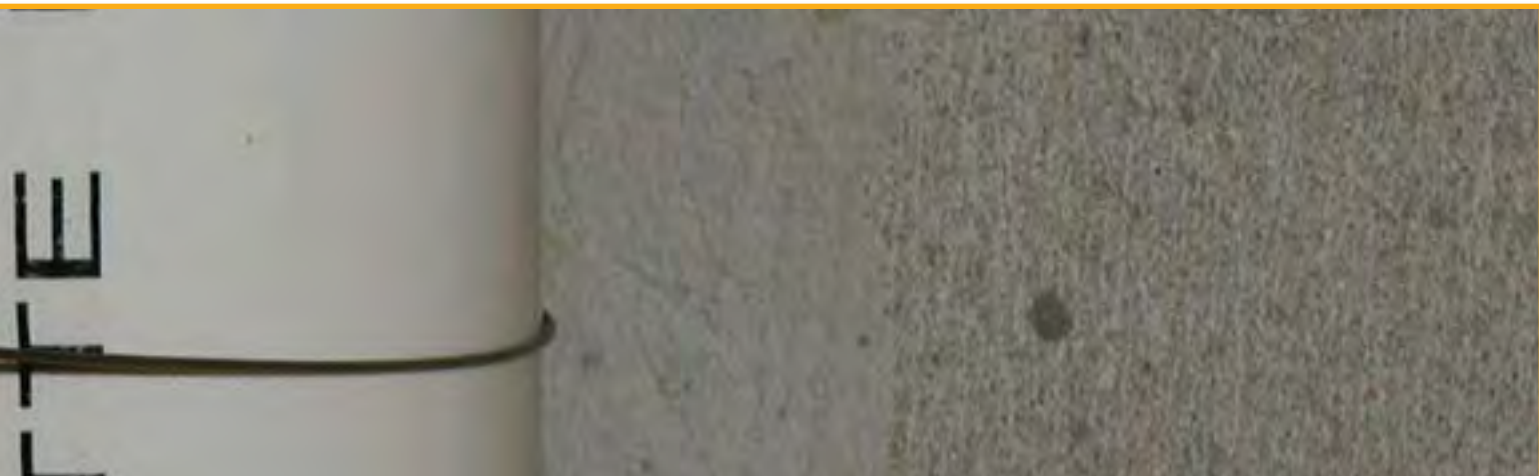


POW-R GRIP PVC CABLE SAWS®
 Strong & Comfortable Loop-Handles
 Stainless Steel Cable

36" PVC CABLE SAW				
PRODUCT #	TUBE SIZE	CASE QUANTITIES	CARTON QUANTITIES	
CSS36	36" Cable	Case - 100 Saws	Master - 300 Saws	
UPC CODE	SHIPPING INFORMATION			
	DESCRIPTION	CASE	MASTER	
615595900361	Carton Size	12" X 10" X 8"	24" X 12" X 12"	
	Carton Weight	6lbs	26lbs	
KIT CONTENTS				
✓ T-Handle Cable Saw		✓ Poly Bag Package	✓ Instruction Insert	



48" PVC CABLE SAW				
PRODUCT #	TUBE SIZE	CASE QUANTITIES	CARTON QUANTITIES	
CSS48	48" Cable	Case - 100 Saws	Master - 300 Saws	
UPC CODE	SHIPPING INFORMATION			
	DESCRIPTION	CASE	MASTER	
615595900484	Carton Size	12" X 10" X 8"	24" X 12" X 12"	
	Carton Weight	7lbs	28.5lbs	
KIT CONTENTS				
✓ T-Handle Cable Saw		✓ Poly Bag Package	✓ Instruction Insert	



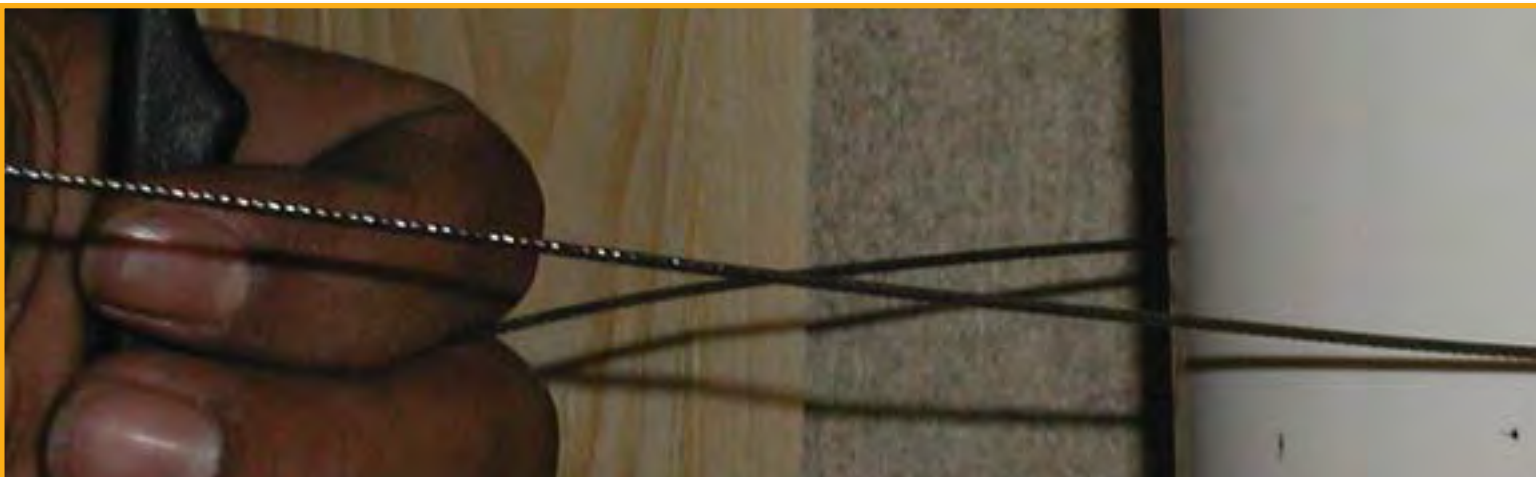


POW-R GRIP PVC CABLE SAWS®
 Strong & Comfortable T-Handles
 Stainless Steel Cable

18" PVC CABLE SAW				
PRODUCT #	TUBE SIZE	CASE QUANTITIES	CARTON QUANTITIES	
CSL18	24" Cable	Case - 100 Saws	Master - 300 Saws	
UPC CODE	SHIPPING INFORMATION			
	DESCRIPTION	CASE	MASTER	
615595900194	Carton Size	12" X 10" X 8"	24" X 12" X 12"	
	Carton Weight	4.5lbs	20.0lbs	
KIT CONTENTS				
✓ Loop Handle Cable Saw		✓ Poly Bag Package	✓ Instruction Insert	



24" PVC CABLE SAW				
PRODUCT #	TUBE SIZE	CASE QUANTITIES	CARTON QUANTITIES	
CSL24	24" Cable	Case - 100 Saws	Master - 300 Saws	
UPC CODE	SHIPPING INFORMATION			
	DESCRIPTION	CASE	MASTER	
615595900255	Carton Size	12" X 10" X 8"	24" X 12" X 12"	
	Carton Weight	5.5lbs	23.5lbs	
KIT CONTENTS				
✓ Loop Handle Cable Saw		✓ Poly Bag Package	✓ Instruction Insert	



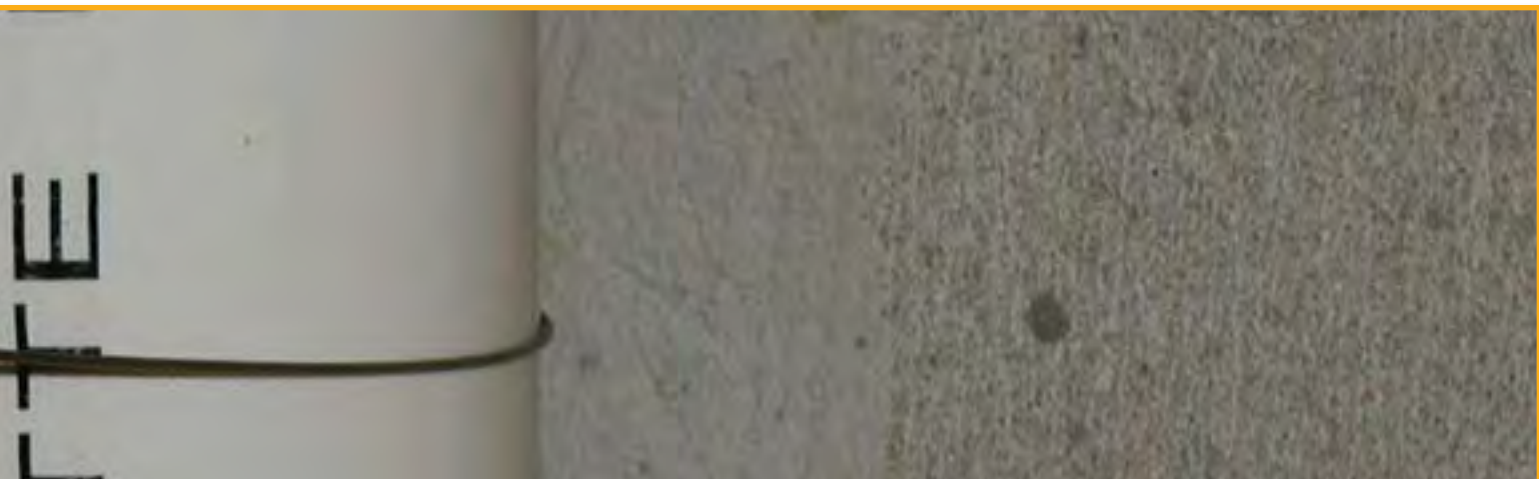


POW-R GRIP PVC CABLE SAWS®
 Strong & Comfortable Loop-Handles
 Stainless Steel Cable

36" PVC CABLE SAW				
PRODUCT #	TUBE SIZE	CASE QUANTITIES	CARTON QUANTITIES	
CSL36	36" Cable	Case - 100 Saws	Master - 300 Saws	
UPC CODE	SHIPPING INFORMATION			
	DESCRIPTION	CASE	MASTER	
615595900378	Carton Size	12" X 10" X 8"	24" X 12" X 12"	
	Carton Weight	6lbs	26lbs	
KIT CONTENTS				
✓ Loop Handle Cable Saw		✓ Poly Bag Package	✓ Instruction Insert	



48" PVC CABLE SAW				
PRODUCT #	TUBE SIZE	CASE QUANTITIES	CARTON QUANTITIES	
CSL48	48" Cable	Case - 100 Saws	Master - 300 Saws	
UPC CODE	SHIPPING INFORMATION			
	DESCRIPTION	CASE	MASTER	
615595900491	Carton Size	12" X 10" X 8"	24" X 12" X 12"	
	Carton Weight	7lbs	28.5lbs	
KIT CONTENTS				
✓ Loop Handle Cable Saw		✓ Poly Bag Package	✓ Instruction Insert	





Pow-R Wrap®
 Water Activated Fiberglass Wrap
 Repairs Almost Any Material
 No Tools Needed - EPA Approved
 Cures in 30 Minutes - Strong (600 PSI)

POW-R WRAP® LITERATURE & SALES AIDS

PRODUCT # PWS0102 - POW-R WRAP® SELL SHEET

**There are 100's of different pipes and hoses...
 ...only 1 product can repair them all!**

PERMANENTLY REPAIRS ALMOST ANY MATERIAL
 COPPER • STEEL • GALVANIZED PIPE • ALL PLASTIC PIPES • RUBBER • CEMENT
 MEETS EPA REQUIREMENTS FOR DRINKING WATER
 WATER ACTIVATED FIBERGLASS TAPE SETS LIKE STEEL

www.pow-rwrap.com

FRONT

NO TOOLS NEEDED! Cures in 30 minutes at 70°F / 21°C. Even meets EPA requirements for drinking water.

POW-R WRAP is a strong, permanent and economic repair. Works on virtually every kind of pipe. An easy alternative to traditional methods such as cementing, sanding, welding, sleeving and replacement. Works on wet, dry, clean, dirty or corroded pipes. Even under water!

POW-R WRAP is ideal for all fluid bearing pipes and hoses:
 •Water •Clean water •Gas •Oxygen •Fuel •Hydrocarbons
 and is recommended for structural repairs to:
 •Bricks •Fencing •Supports •Railroads & Highways •Boats

POW-R Wrap	RECOMMENDED POW-R WRAP SIZES																																																																																													
Complete Pre-Mixed Pre-Measured Ready-to-use Kit!	<table border="1"> <thead> <tr> <th>Pipe Diameter</th> <th>POW-R WRAP SIZE</th> <th>P/N No. #</th> </tr> </thead> <tbody> <tr><td>1/2" - 3/4"</td><td>1" x 30'</td><td>PW130</td></tr> <tr><td>1" - 1 1/2"</td><td>1" x 60'</td><td>PW160</td></tr> <tr><td>1 1/2" - 2"</td><td>1" x 90'</td><td>PW190</td></tr> <tr><td>2" - 2 1/2"</td><td>1" x 120'</td><td>PW220</td></tr> <tr><td>2 1/2" - 3"</td><td>1" x 150'</td><td>PW250</td></tr> <tr><td>3" - 3 1/2"</td><td>1" x 180'</td><td>PW280</td></tr> <tr><td>3 1/2" - 4"</td><td>1" x 210'</td><td>PW310</td></tr> <tr><td>4" - 4 1/2"</td><td>1" x 240'</td><td>PW340</td></tr> <tr><td>4 1/2" - 5"</td><td>1" x 270'</td><td>PW370</td></tr> <tr><td>5" - 5 1/2"</td><td>1" x 300'</td><td>PW400</td></tr> <tr><td>5 1/2" - 6"</td><td>1" x 330'</td><td>PW430</td></tr> <tr><td>6" - 6 1/2"</td><td>1" x 360'</td><td>PW460</td></tr> <tr><td>6 1/2" - 7"</td><td>1" x 390'</td><td>PW490</td></tr> <tr><td>7" - 7 1/2"</td><td>1" x 420'</td><td>PW520</td></tr> <tr><td>7 1/2" - 8"</td><td>1" x 450'</td><td>PW550</td></tr> <tr><td>8" - 8 1/2"</td><td>1" x 480'</td><td>PW580</td></tr> <tr><td>8 1/2" - 9"</td><td>1" x 510'</td><td>PW610</td></tr> <tr><td>9" - 9 1/2"</td><td>1" x 540'</td><td>PW640</td></tr> <tr><td>9 1/2" - 10"</td><td>1" x 570'</td><td>PW670</td></tr> <tr><td>10" - 10 1/2"</td><td>1" x 600'</td><td>PW700</td></tr> <tr><td>10 1/2" - 11"</td><td>1" x 630'</td><td>PW730</td></tr> <tr><td>11" - 11 1/2"</td><td>1" x 660'</td><td>PW760</td></tr> <tr><td>11 1/2" - 12"</td><td>1" x 690'</td><td>PW790</td></tr> <tr><td>12" - 12 1/2"</td><td>1" x 720'</td><td>PW820</td></tr> <tr><td>12 1/2" - 13"</td><td>1" x 750'</td><td>PW850</td></tr> <tr><td>13" - 13 1/2"</td><td>1" x 780'</td><td>PW880</td></tr> <tr><td>13 1/2" - 14"</td><td>1" x 810'</td><td>PW910</td></tr> <tr><td>14" - 14 1/2"</td><td>1" x 840'</td><td>PW940</td></tr> <tr><td>14 1/2" - 15"</td><td>1" x 870'</td><td>PW970</td></tr> <tr><td>15" - 15 1/2"</td><td>1" x 900'</td><td>PW1000</td></tr> </tbody> </table>	Pipe Diameter	POW-R WRAP SIZE	P/N No. #	1/2" - 3/4"	1" x 30'	PW130	1" - 1 1/2"	1" x 60'	PW160	1 1/2" - 2"	1" x 90'	PW190	2" - 2 1/2"	1" x 120'	PW220	2 1/2" - 3"	1" x 150'	PW250	3" - 3 1/2"	1" x 180'	PW280	3 1/2" - 4"	1" x 210'	PW310	4" - 4 1/2"	1" x 240'	PW340	4 1/2" - 5"	1" x 270'	PW370	5" - 5 1/2"	1" x 300'	PW400	5 1/2" - 6"	1" x 330'	PW430	6" - 6 1/2"	1" x 360'	PW460	6 1/2" - 7"	1" x 390'	PW490	7" - 7 1/2"	1" x 420'	PW520	7 1/2" - 8"	1" x 450'	PW550	8" - 8 1/2"	1" x 480'	PW580	8 1/2" - 9"	1" x 510'	PW610	9" - 9 1/2"	1" x 540'	PW640	9 1/2" - 10"	1" x 570'	PW670	10" - 10 1/2"	1" x 600'	PW700	10 1/2" - 11"	1" x 630'	PW730	11" - 11 1/2"	1" x 660'	PW760	11 1/2" - 12"	1" x 690'	PW790	12" - 12 1/2"	1" x 720'	PW820	12 1/2" - 13"	1" x 750'	PW850	13" - 13 1/2"	1" x 780'	PW880	13 1/2" - 14"	1" x 810'	PW910	14" - 14 1/2"	1" x 840'	PW940	14 1/2" - 15"	1" x 870'	PW970	15" - 15 1/2"	1" x 900'	PW1000
Pipe Diameter	POW-R WRAP SIZE	P/N No. #																																																																																												
1/2" - 3/4"	1" x 30'	PW130																																																																																												
1" - 1 1/2"	1" x 60'	PW160																																																																																												
1 1/2" - 2"	1" x 90'	PW190																																																																																												
2" - 2 1/2"	1" x 120'	PW220																																																																																												
2 1/2" - 3"	1" x 150'	PW250																																																																																												
3" - 3 1/2"	1" x 180'	PW280																																																																																												
3 1/2" - 4"	1" x 210'	PW310																																																																																												
4" - 4 1/2"	1" x 240'	PW340																																																																																												
4 1/2" - 5"	1" x 270'	PW370																																																																																												
5" - 5 1/2"	1" x 300'	PW400																																																																																												
5 1/2" - 6"	1" x 330'	PW430																																																																																												
6" - 6 1/2"	1" x 360'	PW460																																																																																												
6 1/2" - 7"	1" x 390'	PW490																																																																																												
7" - 7 1/2"	1" x 420'	PW520																																																																																												
7 1/2" - 8"	1" x 450'	PW550																																																																																												
8" - 8 1/2"	1" x 480'	PW580																																																																																												
8 1/2" - 9"	1" x 510'	PW610																																																																																												
9" - 9 1/2"	1" x 540'	PW640																																																																																												
9 1/2" - 10"	1" x 570'	PW670																																																																																												
10" - 10 1/2"	1" x 600'	PW700																																																																																												
10 1/2" - 11"	1" x 630'	PW730																																																																																												
11" - 11 1/2"	1" x 660'	PW760																																																																																												
11 1/2" - 12"	1" x 690'	PW790																																																																																												
12" - 12 1/2"	1" x 720'	PW820																																																																																												
12 1/2" - 13"	1" x 750'	PW850																																																																																												
13" - 13 1/2"	1" x 780'	PW880																																																																																												
13 1/2" - 14"	1" x 810'	PW910																																																																																												
14" - 14 1/2"	1" x 840'	PW940																																																																																												
14 1/2" - 15"	1" x 870'	PW970																																																																																												
15" - 15 1/2"	1" x 900'	PW1000																																																																																												

EACH KIT CONTAINS:
 • Resin impregnated Fiberglass repair tape (30')
 • POW-R PLUG repair patch
 • 1 pair protective gloves
 • Full instructions

TECHNICAL INFORMATION
 • Cure Time: 30 minutes at 70°F / 21°C
 • Temperature Range: 50°F to 100°F
 • Humidity: 20% to 90%
 • Surface Preparation: Clean, dry, and free of oil, dirt, and loose material.
 • Application: Apply to clean, dry, and free of oil, dirt, and loose material.
 • Storage: Store in a cool, dry place.
 • Shelf Life: 12 months.

APPROVED TO EPOXY
 Approved for use with epoxy resins and hardeners.

TOXICITY
 Non-toxic when used as directed.

CHEMICAL RESISTANCE
 Resistant to most acids, alkalis, and solvents.

MECHANICAL RESISTANCE
 Tensile Strength: 600 PSI
 Elongation: 200%
 Modulus: 1.5 x 10⁶ PSI

So easy to use...

BACK

PRODUCT # PWT0102 - POW-R WRAP® TRI-FOLD BROCHURE

INDUSTRIAL STRENGTH PIPE & HOSE Repair Kit

WATER ACTIVATED FIBERGLASS TAPE SETS LIKE STEEL

ACCESS-ABLE TECHNOLOGIES
 1278 HENRY DRIVE
 SUITE 115
 LONGWOOD, FL 32750
 TELEPHONE (407) 834-2999
 FAX (407) 834-8902
 VISIT OUR HOME PAGE AT WWW.POW-RWRAP.COM

Frequently Asked Questions

What is POW-R WRAP?
 POW-R WRAP is a specially formulated fiberglass tape designed to repair water lines, sewer lines, bulk lines, pipe lines, and anything else that supports fluids.

What applications are POW-R WRAP designed to support?
 POW-R WRAP has been tested to support up to 100 PSI of pressurized lines and was able to prevent infiltration by maintaining a tight seal.

What types of tools are needed to apply POW-R WRAP?
 No tools are required when applying POW-R WRAP to pipes as long as there is no movement or leakage of any kind in the pipe when applied.

At what temperatures can POW-R WRAP be used?
 POW-R WRAP has been tested to many temperatures ranging from 500 degrees F to 500 degrees F. Because of the need for moisture to react to start the chemical reaction the degree of temperature only has bearing on the time frame for the complete curing process to occur.

Can POW-R WRAP be used to prevent gas leaks from corrosion of pipes caused from the elements?
 Although anyone working with gas pipes should be certified in the area before attempting any repairs.

What types of pipes can POW-R WRAP be used?
 POW-R WRAP can be applied to all types of pipes including PVC, cast iron, galvanized, and clay to name a few. The uniqueness of POW-R WRAP lies in its EPA approval for use on drinking water lines as well as being suitable for sewer, irrigation, and chemical lines.

What are the choices of the application of pipe knowing again after applying POW-R WRAP?
 Not only does POW-R WRAP seal broken pipes, it also strengthens the vulnerable areas of the damaged pipe allowing it to be even stronger in some instances than the original.

Is POW-R WRAP a permanent repair?
 POW-R WRAP can be considered a permanent repair to your industry and home uses. It can also be used as an emergency fix until a maintenance crew has the time to fix the damage or until their maintenance schedule. Even with POW-R WRAP enables the home owner to maintain a responsible to make the decision.

Does POW-R WRAP perform in different areas?
 Yes. POW-R WRAP has many uses in cleaning drains. It is all dependent on the size of piping you are going to apply it to. The Selection chart outlines the recommended POW-R WRAP sizes to ensure effective repair of the damaged pipe.

RECOMMENDED POW-R WRAP SIZES																																																																																													
<table border="1"> <thead> <tr> <th>Pipe Diameter</th> <th>POW-R WRAP</th> <th>P/N Number</th> </tr> </thead> <tbody> <tr><td>1/2" - 3/4"</td><td>1" x 30'</td><td>PW130</td></tr> <tr><td>1" - 1 1/2"</td><td>1" x 60'</td><td>PW160</td></tr> <tr><td>1 1/2" - 2"</td><td>1" x 90'</td><td>PW190</td></tr> <tr><td>2" - 2 1/2"</td><td>1" x 120'</td><td>PW220</td></tr> <tr><td>2 1/2" - 3"</td><td>1" x 150'</td><td>PW250</td></tr> <tr><td>3" - 3 1/2"</td><td>1" x 180'</td><td>PW280</td></tr> <tr><td>3 1/2" - 4"</td><td>1" x 210'</td><td>PW310</td></tr> <tr><td>4" - 4 1/2"</td><td>1" x 240'</td><td>PW340</td></tr> <tr><td>4 1/2" - 5"</td><td>1" x 270'</td><td>PW370</td></tr> <tr><td>5" - 5 1/2"</td><td>1" x 300'</td><td>PW400</td></tr> <tr><td>5 1/2" - 6"</td><td>1" x 330'</td><td>PW430</td></tr> <tr><td>6" - 6 1/2"</td><td>1" x 360'</td><td>PW460</td></tr> <tr><td>6 1/2" - 7"</td><td>1" x 390'</td><td>PW490</td></tr> <tr><td>7" - 7 1/2"</td><td>1" x 420'</td><td>PW520</td></tr> <tr><td>7 1/2" - 8"</td><td>1" x 450'</td><td>PW550</td></tr> <tr><td>8" - 8 1/2"</td><td>1" x 480'</td><td>PW580</td></tr> <tr><td>8 1/2" - 9"</td><td>1" x 510'</td><td>PW610</td></tr> <tr><td>9" - 9 1/2"</td><td>1" x 540'</td><td>PW640</td></tr> <tr><td>9 1/2" - 10"</td><td>1" x 570'</td><td>PW670</td></tr> <tr><td>10" - 10 1/2"</td><td>1" x 600'</td><td>PW700</td></tr> <tr><td>10 1/2" - 11"</td><td>1" x 630'</td><td>PW730</td></tr> <tr><td>11" - 11 1/2"</td><td>1" x 660'</td><td>PW760</td></tr> <tr><td>11 1/2" - 12"</td><td>1" x 690'</td><td>PW790</td></tr> <tr><td>12" - 12 1/2"</td><td>1" x 720'</td><td>PW820</td></tr> <tr><td>12 1/2" - 13"</td><td>1" x 750'</td><td>PW850</td></tr> <tr><td>13" - 13 1/2"</td><td>1" x 780'</td><td>PW880</td></tr> <tr><td>13 1/2" - 14"</td><td>1" x 810'</td><td>PW910</td></tr> <tr><td>14" - 14 1/2"</td><td>1" x 840'</td><td>PW940</td></tr> <tr><td>14 1/2" - 15"</td><td>1" x 870'</td><td>PW970</td></tr> <tr><td>15" - 15 1/2"</td><td>1" x 900'</td><td>PW1000</td></tr> </tbody> </table>	Pipe Diameter	POW-R WRAP	P/N Number	1/2" - 3/4"	1" x 30'	PW130	1" - 1 1/2"	1" x 60'	PW160	1 1/2" - 2"	1" x 90'	PW190	2" - 2 1/2"	1" x 120'	PW220	2 1/2" - 3"	1" x 150'	PW250	3" - 3 1/2"	1" x 180'	PW280	3 1/2" - 4"	1" x 210'	PW310	4" - 4 1/2"	1" x 240'	PW340	4 1/2" - 5"	1" x 270'	PW370	5" - 5 1/2"	1" x 300'	PW400	5 1/2" - 6"	1" x 330'	PW430	6" - 6 1/2"	1" x 360'	PW460	6 1/2" - 7"	1" x 390'	PW490	7" - 7 1/2"	1" x 420'	PW520	7 1/2" - 8"	1" x 450'	PW550	8" - 8 1/2"	1" x 480'	PW580	8 1/2" - 9"	1" x 510'	PW610	9" - 9 1/2"	1" x 540'	PW640	9 1/2" - 10"	1" x 570'	PW670	10" - 10 1/2"	1" x 600'	PW700	10 1/2" - 11"	1" x 630'	PW730	11" - 11 1/2"	1" x 660'	PW760	11 1/2" - 12"	1" x 690'	PW790	12" - 12 1/2"	1" x 720'	PW820	12 1/2" - 13"	1" x 750'	PW850	13" - 13 1/2"	1" x 780'	PW880	13 1/2" - 14"	1" x 810'	PW910	14" - 14 1/2"	1" x 840'	PW940	14 1/2" - 15"	1" x 870'	PW970	15" - 15 1/2"	1" x 900'	PW1000
Pipe Diameter	POW-R WRAP	P/N Number																																																																																											
1/2" - 3/4"	1" x 30'	PW130																																																																																											
1" - 1 1/2"	1" x 60'	PW160																																																																																											
1 1/2" - 2"	1" x 90'	PW190																																																																																											
2" - 2 1/2"	1" x 120'	PW220																																																																																											
2 1/2" - 3"	1" x 150'	PW250																																																																																											
3" - 3 1/2"	1" x 180'	PW280																																																																																											
3 1/2" - 4"	1" x 210'	PW310																																																																																											
4" - 4 1/2"	1" x 240'	PW340																																																																																											
4 1/2" - 5"	1" x 270'	PW370																																																																																											
5" - 5 1/2"	1" x 300'	PW400																																																																																											
5 1/2" - 6"	1" x 330'	PW430																																																																																											
6" - 6 1/2"	1" x 360'	PW460																																																																																											
6 1/2" - 7"	1" x 390'	PW490																																																																																											
7" - 7 1/2"	1" x 420'	PW520																																																																																											
7 1/2" - 8"	1" x 450'	PW550																																																																																											
8" - 8 1/2"	1" x 480'	PW580																																																																																											
8 1/2" - 9"	1" x 510'	PW610																																																																																											
9" - 9 1/2"	1" x 540'	PW640																																																																																											
9 1/2" - 10"	1" x 570'	PW670																																																																																											
10" - 10 1/2"	1" x 600'	PW700																																																																																											
10 1/2" - 11"	1" x 630'	PW730																																																																																											
11" - 11 1/2"	1" x 660'	PW760																																																																																											
11 1/2" - 12"	1" x 690'	PW790																																																																																											
12" - 12 1/2"	1" x 720'	PW820																																																																																											
12 1/2" - 13"	1" x 750'	PW850																																																																																											
13" - 13 1/2"	1" x 780'	PW880																																																																																											
13 1/2" - 14"	1" x 810'	PW910																																																																																											
14" - 14 1/2"	1" x 840'	PW940																																																																																											
14 1/2" - 15"	1" x 870'	PW970																																																																																											
15" - 15 1/2"	1" x 900'	PW1000																																																																																											

FRONT

Applications and Uses

HOME: Water lines, hot handles, drainage lines, sink traps, broken sprinkler system lines, broken furnace, furnace pipes, central vacuum lines, strength deck piling and pressure container fittings, will last 2-3 times longer.

POOL: Vertical lines, underground circulating systems, and PVC pipes in pool pump systems.

AUTOMOBILES: Radiator hoses, mufflers, exhaust systems, hydraulic lines, oil lines, and strengthening of cracked or broken parts.

BOAT: Hulls on hull, overhead, water circulating systems, broken out, and deck under support.

FURNITURE: Broken leg, arm, or support.

BUSINESS: Electrical and interior water and sewer lines, interior application lines (fire safety equipment), structural supports, concrete piling, cable splicing, pipe supports and hangers, hoses or routing, backing pipes.

FARM: Equipment repair, water lines, irrigation systems, fence posts, barn repair, breaks of metal pipes.

COMMERCIAL: Hotels, emergency building repair for office buildings, schools, and shopping centers.

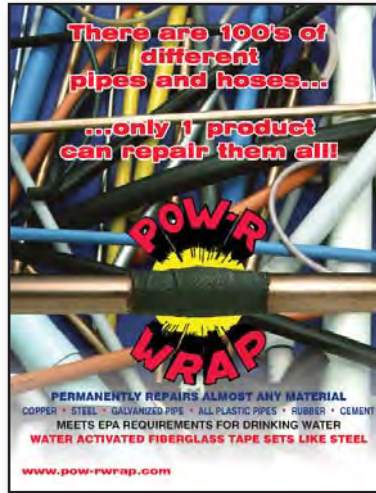
BACK



Pow-R Wrap®
Water Activated Fiberglass Wrap
Repairs Almost Any Material
No Tools Needed - EPA Approved
Cures in 30 Minutes - Strong (600 PSI)

POW-R WRAP® LITERATURE & SALES AIDS

PRODUCT NO# PWS0102 - POW-R WRAP® POSTER



POW-R WRAP® HATS

PRODUCT NO# PWCAP



PRODUCT NO# PWCAP-BW





Pow-R Wrap®
 Water Activated Fiberglass Wrap
 Repairs Almost Any Material
 No Tools Needed - EPA Approved
 Cures in 30 Minutes - Strong (600 PSI)

POW-R WRAP® LITERATURE & SALES AIDS

PRODUCT # PWSSBAG - CARRY BAG SET



POW-R PATCH® LITERATURE

PRODUCT # PPS0503 - POW-R PATCH® SALES SHEET



- Convenient
- Pre-measured
- Fast - 5 minute Cure
- Simple to Apply
- Easy Mixing
- No Cleanup
- No Tools
- No Fuss
- No Measuring
- No Mess

Whether You're Problem IS....

Fix It Fast & Easy With POW-R PATCH

Flat Surfaces



Round Surfaces



Square Surfaces



Large Surfaces



Small Surfaces



POW-R PATCH puts simplicity back into repairs with a No Mess, No Measuring, No Waiting ready to use kit. Each Simple-To-Use kit will set on wet surfaces, and will adhere to PVC, Metal, Wood, Fiberglass, Plastic, etc. and can be used on a broad spectrum of surfaces. POW-R PATCH is perfect for fast repairs in farming, industry, transportation, marine, painting, and aviation as well as around the home. Common uses of the POW-R PATCH kit in the field are repair of overseas containers, chemical and fertilizer tanks, semi-trailers and roof repair, drums, tanks and many other flat surfaces or open channelled containers.

FRONT



Making Sure Place within the provided limits. Don't stretch the wrap for additional material or the possibility of failure.



Epoxy Repair Kit contains:

- Ready to use Kit
- Pair of protective gloves

POW-R PATCH is a specially formulated, uniquely packaged, No Mess, pre-measured epoxy patch specifically designed for flat surfaces such as tanks, drums, pipes and many other flat or open channelled containers. With its easy flow, this pre-measured compound system is a simple, fast and convenient solution for what used to be a messy and difficult repair.

The pre-measured pre-measured components and pre-cured fiberglass cloth are contained in a self-contained pouch, ensuring built-in accuracy. This pre-cured kit is perfect for emergency, additional materials and eliminates the guesswork for material consumption and speed of repair. Money saved when you use the pouches to store any more or clean up!

Easy To Use (Do Not Open Bag Before Repair)

- Remove all pressure from the tank and ensure the strongest possible bond.
- Thoroughly clean the area of the break, sanding or roughing the surface will aid in the bonding strength.
- Put all the pre-measured glass powder in a bucket or bucket near end of the container package. Pull out the pre-measured glass powder and use by hand or by using the package back to distribute a 90° degree surface for 2 inches and the roller in certain or sometimes more.
- Apply the cloth beyond the damaged area in each direction. Strong patch will flow to be layered up when removed from bag. Wash and dry thoroughly and apply any stress from within the bag for added strength. Pressure should be applied to keep surface repair.

Technical Information

Chemical Resistance	Highly resistant to a broad range of chemicals including acids, alkalis, bases & solvents			
Tensile Strength @ 50°C	144 MPa	6,400 PSI	Volume Resistance	1.4 (2000, 2000)
Tensile Strength @ 23°C	2,000 MPa	450,000 PSI	Tensile Modulus	103 GPa
Shear Strength	12 MPa	2,688 PSI	Seismic Coefficient (C)	104 Pa
Modulus @ 23°C	7 GPa	1,000,000 PSI	Modulus	103 GPa
Modulus @ 50°C	7 GPa	1,000,000 PSI	Displacement Factor (D)	103 Pa
Hardness	107 MPa	15,400 PSI	Hardness	103 Pa

Size - 2 x 12, 2'x12' 4'x8' 4'x12' (Custom Sizes Available with request)

BACK



STIC-O-STEEL®
 5-Minute Cold Weld Epoxy Putty
 Impervious to all Acids
 Withstands Temperatures of 550° F

STIC-O-STEEL® HATS

PRODUCT # SSCAP-BC	PRODUCT # SSCAP-C

STIC-O-STEEL® LITERATURE & SALES AIDS

PRODUCT # SSS0402 - STIC-O-STEEL® SALES SHEET

--	--

FRONT **BACK**



FREEZE-FIX®

Frozen Pipe Repair Kit
 Water Activated Repair Kit
 Easy to use - Tested to withstand -91° F (-68° C)

FREEZE-FIX® LITERATURE & SALES AIDS

PRODUCT # FFS0103 - FREEZE-FIX® SALES SHEET

FREEZE-FIX®

Frozen Pipes Aren't Just an Inconvenience!

An average of a quarter-million families have their homes ruined and their lives disrupted each winter...all because of water pipes that freeze, burst and destroy.

I told you to fix it with FREEZE-FIX!

An eight-inch (three inchwater) crack in a pipe can blow up to 250 gallons (946 liters) of water if they windsock doors, furniture and possessions. (32nd Street) (NYC) and copper pipes may burst!

FRONT

FREEZE-FIX®

Before: [Image of pipe with hole]

After: [Image of pipe repaired]

FREEZE-FIX is the ideal method that anyone can use to repair pipes damaged by freezing.

FREEZE-FIX can also be used to repair and reinforce leaking pipes that contribute to other damaged areas susceptible to freezing conditions.

FREEZE-FIX can be applied to all types of pipes even underground!

Easy To Use

- Simply clean surface of pipe
- Cut off the necessary epoxy putty
- Remove until two colors are blended
- Apply putty to split or leak area
- Activate tape to water
- Wrap entire area
- THE JOB IS DONE!

FREEZE-FIX kits contain
 Everything you need to make a repair

- POW-R WRAP 2" x 60' (50mm x 1828mm) resin impregnated fiberglass tape, which is activated by wetting or water.
- 1 ounce "STIC-O-STEEL" epoxy putty
- Protective Gloves
- Easy to follow instructions and illustrations

Technical Information

POW-R WRAP Tape	STIC-O-STEEL Epoxy Putty
Color	White
Compressive Strength	16,200 PSI
Flexure Strength	6,000 PSI
Mod. Elasticity	300 PSI
Shear Strength	300 PSI
Hardness	99.9 Shore D
Heat Resistance	300 °F (150 °C)

NSF (National Sanitation Foundation) Approved for Use in Potable Water Systems

NSF (National Sanitation Foundation) Approved for Use in Potable Water Systems

NSF (National Sanitation Foundation) Approved for Use in Potable Water Systems

NSF (National Sanitation Foundation) Approved for Use in Potable Water Systems

BACK



FREEZE-FIX®

Frozen Pipe Repair Kit
 Water Activated Repair Kit
 Easy to use - Tested to withstand -91° F (-68° C)

FREEZE-FIX® KIT 260			
PRODUCT #	WRAP SIZE	CASE QUANTITIES	CARTON QUANTITIES
FF260	2" X 60"	Case - 12 Kits	Master - 48 Kits
UPC CODE	SHIPPING INFORMATION		
	DESCRIPTION	CASE	MASTER
615595200089	Carton Size	10 1/4" X 8 X 7"	17" X 11" X 16"
	Carton Weight	4lbs	16lbs
FREEZE-FIX® KIT CONTENTS			
✓ Water Activated Wrap		✓ 1/2 Ounce Putty	✓ Full Color Inserts
✓ Latex Gloves		✓ Claimshell Package	



SOLD**SHIP TO**

Account # _____
 P.O. Number _____
 Company Name _____
 Buyer's Name / Title _____
 Street Address _____
 City / State / Zip _____
 Phone _____
 Fax _____
 Email _____

Company Name _____
 Contact / Title _____
 Street Address _____
 City / State / Zip _____

ORDER INFORMATION

QTY	PRODUCT #	DESCRIPTION	UNIT PRICE	TOTAL
			SUBTOTAL	
			HANDLING CHARGE	\$5.00
			SHIPPING	<i>FREE</i>
(Without a current Resale Certificate Number, sales tax will be applied to shipments within Florida. TAXES				
			TOTAL	

PAYMENT**CONTACT INFORMATION**

ATI Account (2% 10 Days, Net 30 Days) Check Enclosed
 VISA MASTER CARD AMEX DISCOVER
 Card # _____
 Exp. Date _____
 Signature _____

1275 Bennett Drive, Unit 115
 Longwood, Florida 32750
 Ph: 407-834-2999 or 800-572-4894
 Fax: 407-834-8992 or 888-831-2941
 www.accessabletech.com
 info@accessabletech.com



BUSINESS CREDIT APPLICATION

Trade Name:	Today's Date:
Legal Corp. Name:	Accounts Payable Contact:
Business Address:	How long in business:
	Type of Business:
Delivery Address:	Business is a: (Please check only one)
	<input type="checkbox"/> Corporation <input type="checkbox"/> Patnrnership <input type="checkbox"/> Sole Proprietorship
Phone: ()	How long in present location:
Fax: ()	Address of previous location:
Dun & Bradstreet #:	
Amount of Credit Requested:	Federal I.D. Number:
State of Incorporation:	Sales Tax Number:

Give full name and home address of individual, and if a firm of each partner or if a corporation of each officer and office held by each.

Name:	Name:
SSN:	SSN:
D/L#: State:	D/L#: State:
Home Address:	Home Address:
Phone: ()	Phone: ()
Name:	Name:
SSN:	SSN:
D/L#: State:	D/L#: State:
Home Address:	Home Address:
Phone: ()	Phone: ()

Bank References

Name:	Account #
Address:	Phone: ()
	Contact:
City / State / Zip:	

Trade and Credit References

Name:	Name:
Address:	Address:
Account #	Account #:
Phone: ()	Phone: ()
Fax: ()	Fax: ()

Personal Guarenty

In consideration of the extension of credit to the applicant named herein, whether by _____ or any of its subsidiaries of affiliates, the undersigned as individual(s) and not as corporate officers, jointly severally, and unconditionally guaranties and promises to pay all amounts due and owned by the applicant to Access-Able Technologies, Inc. and/ or its subsidiaries. This is a continuing guaranty and obligations arising hereunder shall not be affected by any change in terms of indebtedness, the extension of credit beyond amounts specified herein, a change in the term or time of payment, a change in the form of indebtedness or acceptance of security of collateral. Vendor shall not be required to exhaust any remedies against applicant prior to exercising rights granted hereby. If it should become necessary to collect sums due by enforcing the terms of this credit agreement against applicant and/or against guarantor(s), the undersigned individuals, jointly, severally and unconditionally guaranty and agree to pay all costs, including reasonable attorney's fees at both the trial and appellate levels.

Guarantor:	Guarantor:
Witness:	Witness:

Terms of Credit

Applicant authorizes vendor to obtain necessary credit information at any time from any source and agrees to pay for purchases according to the credit terms on vendor's invoices or, if non appear, according to terms of Net 30. Applicant agrees to a 1-1/2% per month service charge or the maximum allowed by law, whichever is lower, if not paid by the 30th day of each month following purchase. Applicant warrants that all information appearing on this form is true and correct as of the date below and agrees to notify vendor in writing within (30) days of any change in business organization, financial condition or controlling ownership. In consideration of any extension of credit by Access-Able Technologies, Inc. Should and indebtedness not be paid in accordance with the terms of credit, the undersigned agrees to pay all costs of collection, including reasonable attorney's fees at both the trial and appellate levels. Attorney's fees and costs shall be payable whether suit be brought or not. This agreement is interpreted and governed by the laws of the State of Florida. Venue for any proceedings shall take place in Florida.

Applicant: _____	Date: _____
Applicant: _____	Date: _____

PAST CORPORATE SPONSORSHIPS



2 seasons of the Florida Everblades Hockey Team.

Sponsorship included Season Tickets, T-shirts, Print Ads and a 3D Animated Advertisement.



3 Seasons of the Orlando Seals Hockey Team

Sponsorship included Season Tickets, T-shirts, Print Ads and two 3D Animated Advertisements.



www.ACCESSABLETECH.com

PH: 800-572-4894 / FAX: 888-831-2941